

# **Business Environment**

**Hiroshi Takenaka, President**

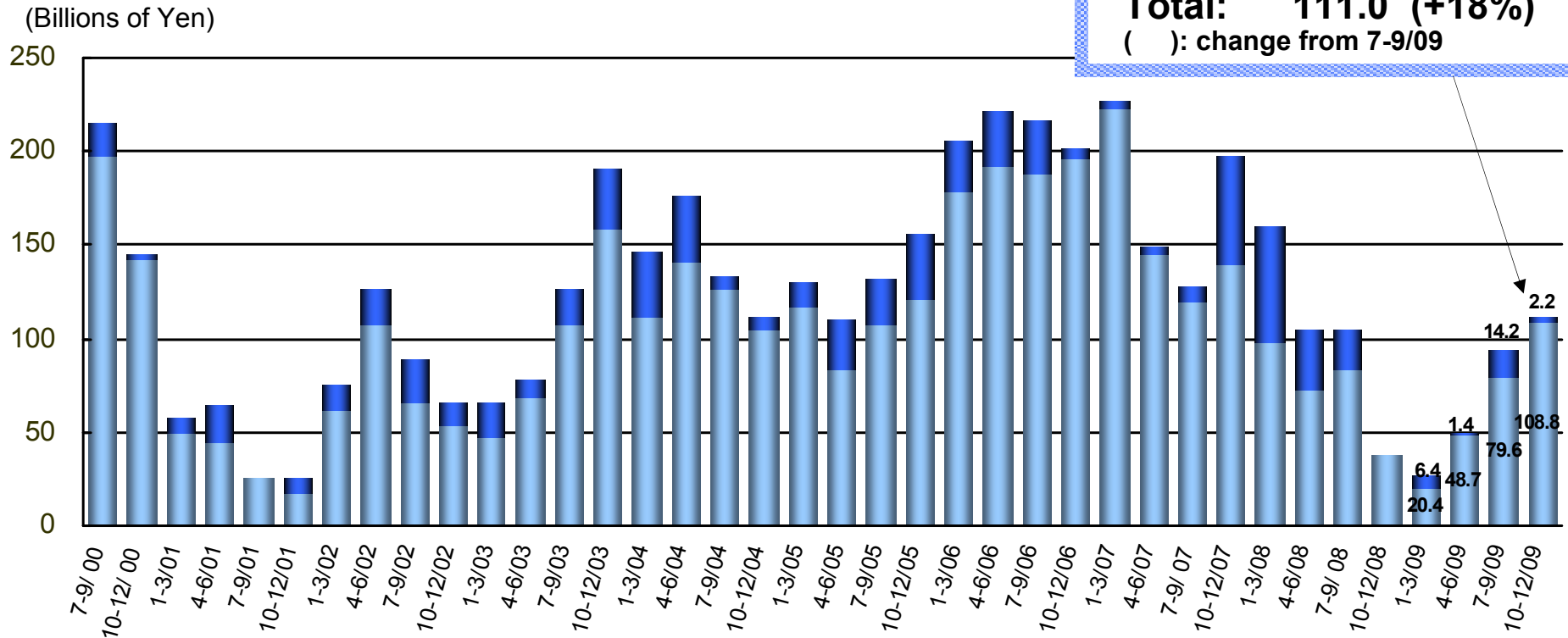
**February 9, 2010**



# Quarterly SPE+FPD/PVE Orders

■ FPD/PVE order  
■ SPE order

**10-12/09**  
**SPE 108.8 (+37%)**  
**FPD/PVE 2.2 (-84%)**  
**Total: 111.0 (+18%)**  
 ( ): change from 7-9/09

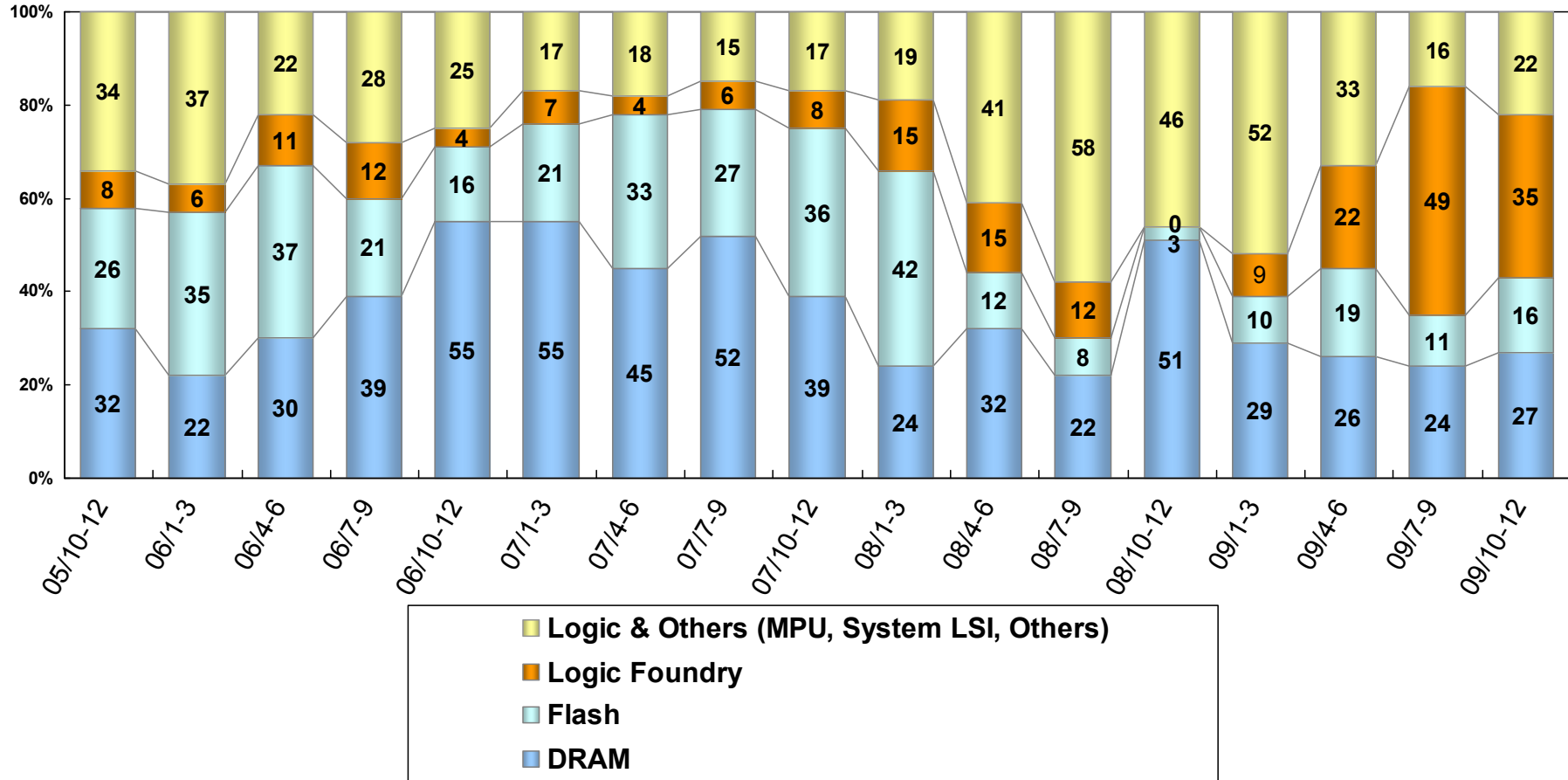


\* Figures until Oct-Dec/05 are non-consolidated, figures from Jan-Mar/06 are consolidated.

\* Main difference between consolidated and non-consolidated: Consolidated figures include post-sales orders at overseas subsidiaries.



# SPE Orders by Application (Equipment only)



(TEL estimate)

# Business Environment in 2010

## ▶ **SPE capex**

Continued positive order-booking environment, due to strong consumers demand and reaction to capex reductions in 2009

- NAND: Solid smartphone-related demand, 3xnm capacity investment expected
- DRAM: Major customers expanding scaling investment in 4xnm
- Logic/Foundry: Fab utilization increased, investment in 40nm/32nm continuing

## ▶ **FPD capex**

Investment in new fab lines driven by sustained boom in Chinese demand for TVs.

## ▶ **PV capex**

Uncertainty still remains, but expecting recovery of capex later this year along with global economic upturn



# Restart Plans for New Miyagi Plant

## Shorten development/production period of leading-edge etch systems

- Integrate development and mass production functions
- Aim to maximize productivity through supply chain and logistics enhancement
- Secure latest technology and top-class engineers through academic-industrial collaboration

■ Location:	Taiwa Research Park, Miyagi, Japan
■ Area:	290,569 m <sup>2</sup>
■ Construction:	Start summer 2010, complete spring 2011 at earliest
■ Total investment:	25 billion yen

Tokyo Electron Technology Development Institute, Inc.  
in Sendai City, Miyagi, Japan



# Summary

- **Expecting larger-scale capex by memory customers, and better business environment**
- **Further reduced forecast deficit for FY2010 full year, due to increasing sales and good progress on cost cut program. Forecasting 2nd half operating income to turn positive**
- **Decided to start construction of new Miyagi plant, aiming to strengthen development and mass production functions for leading-edge products**

